

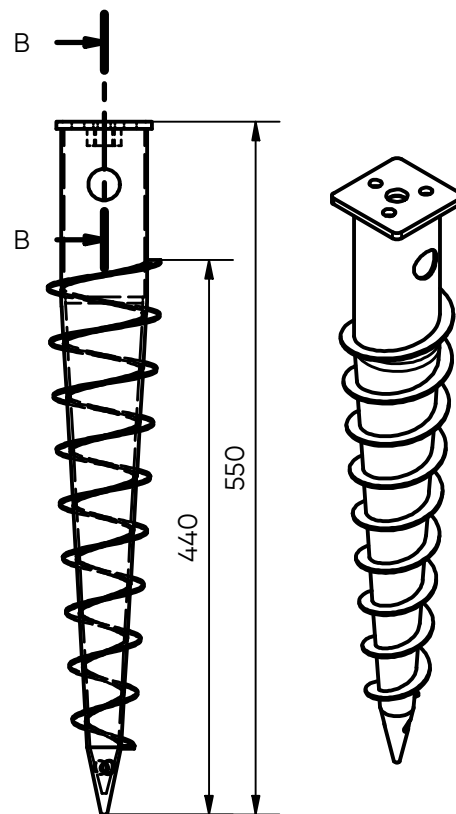
FIRST BASE

Ground screw $\text{Ø}68 \times 2 \times 550 \text{ mm}$



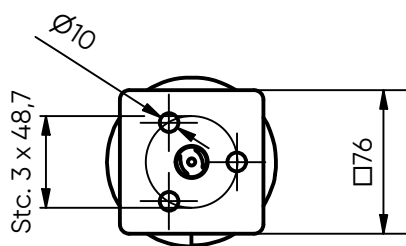
Art. No:	11006	
Weight:	2,1 kg	
Dimensions:	Pipe: 68 x 2 x 550 mm Flange: 6,0 x 76 x 76 mm	
Materials:	Steel grade Pipe: S235 Steel grade Flange: S355 Surface treatment: Galvanized acc. to EN-ISO 1461	
Installation:	Electric XE 2.5 machine Art.No: 12002	Manual mounting bar 22x550 Art.No: 12051
Use:	Light construction e.g. porches, garden rooms.	
Fixation:	M16 Bolts	
Products to combine:	58135 - POLE HOLDER M16 58131 - U-BRACKET	

[Click here for the FIRST BASE Load Capacity Chart](#)

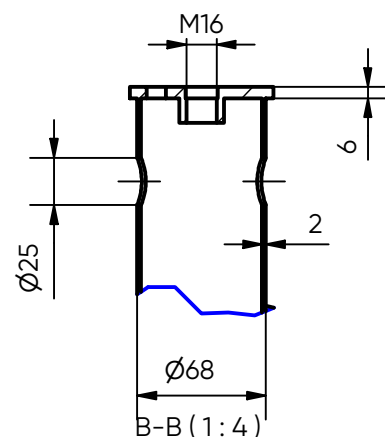


Side View (1 : 6)

3D view (1 : 6)



TOP view (1 : 4)



CE-certificate conform EN1090