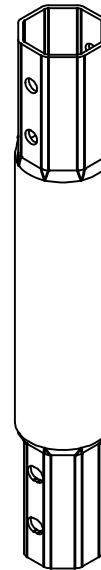


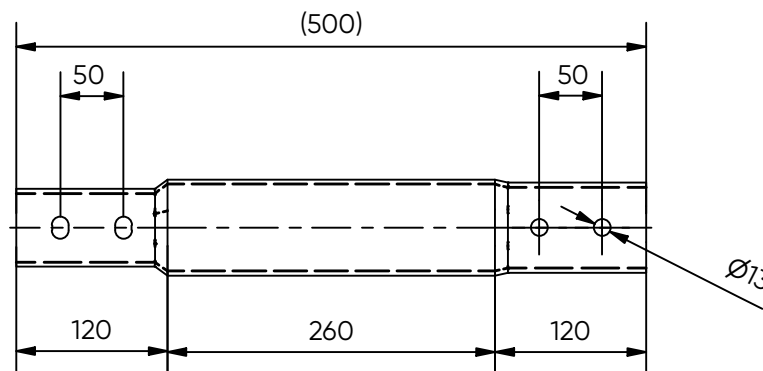
FIRST BASE V-76 x 500 EXTENSION



Art. No:	58211	
Weight:	3,1 kg	
Dimensions:	Pipe: 76,1 x 3,6 x 500 mm (net: 380)	
Materials:	Steel grade Pipe: S235 Surface treatment: Galvanized acc. to EN-ISO 1461	
Installation:	Electric machine 5.500Nm	Art.No: 12001
	Pneumatic machine 10.800Nm	Art.No: 12005
	Hydraulic machine 7.500Nm	Art.No: 120950
	Hydraulic machine 12.000Nm	Art.No: 120960
Use:	Light construction e.g. porches, garden rooms and modular homes.	
Fixation:	M12 Bolts	
Products to combine:	58200 - V-76 GROUND SCREW 800mm 58201 - V-76 GROUND SCREW 1250mm 58202 - V-76 GROUND SCREW 1550mm 58203 - V-76 GROUND SCREW 2050mm 58211 - V-76 EXTENSION 500mm 58212 - V-76 EXTENSION 1000mm 58213 - V-76 EXTENSION 1500mm 58214 - V-76 EXTENSION 2000mm 58221 - V-76 ROUND FLANGE	
Click here for the FIRST BASE Load Capacity Chart		



3D view (1 : 6)



Side view (1 : 6)