



PRODUCT RANGE



FIRST BASE PRODUCT RANGE

The FIRST BASE PRO-Series is developed for heavier load bearing capacities. Produced in accordance with EN-1090-2 standards and hot dip galvanised, the PRO-type ensures you extreme stability, with the extra benefit of easy (and quick!) installation in every kind of soil. The perfect solution for temporary as well as permanent constructions. Available in both extendable and fixed lengths.

YOUR BENEFITS:

- › Reusable and recyclable; circular foundation
- › No concrete needed; no drying time
- › No heavy machinery needed; no damage to the environment
- › No maintenance; long lifespan
- › Quickly installed; even in winter

INDEX

› ABOUT FIRST BASE	04
› FIXED FLANGE	08
› EXTENDABLE	14
› G3 MODEL	30
› RIM MODEL	34
› ACCESSORIES	36
› MACHINES	38
› TEST EQUIPMENT	48

LOOK AT THE
PRODUCT RANGE
ONLINE



SUSTAINABLE, CIRCULAIR FOUNDATIONS

FIRST BASE provides quality ground screws. From **development** to **production** and **installation** of the screws. FIRST BASE has the unique capability of **calculating** the load bearing capacity of ground screws, based on ground reports and soil tests. We can offer you a safe and guaranteed solid foundation.

FIRST BASE Ground Screws has its base in Uden, the Netherlands with European locations for specific markets. We are a team of **passionate specialists** dedicated to revolutionizing the way foundations are built. With a focus on precision engineering and sustainability, we have redefined the very concept of stability in construction.

Our roots run deep, just like our innovative ground screw technology. With years of experience in the industry, we've honed our expertise to provide you with the most efficient, **environmentally friendly**, and **cost-effective** foundation solutions. What sets us apart is our commitment to the environment.

We believe in sustainability, and our ground screws are designed to minimize the ecological footprint of your projects. They offer a greener alternative to traditional concrete foundations, ensuring that you not only build better but also contribute to a healthier planet.

Our screw foundations adhere to EN-1090-2 standards and bear the CE mark, a legal requirement for construction products in the EEA and beyond. This certification guarantees compliance with regulations and safety standards.

Join us in reimagining foundations, and let's create a world where stability meets sustainability. **FIRST BASE Ground Screw, Building Tomorrow, Today.**



OUR SPECIALISTS



JORIS BULLENS

General Manager

"A sustainable planet, that's what I want for my kids. Our product and our vision are just that!"



DANNY VAN DEN ELZEN

Technical Director

"We continue to push the boundaries of foundations with innovation and smart solutions."



CAMILE GISBERS

Sales Director

"From our European warehouses we can deliver the foundation that suits your project, big or small."

At FIRST BASE Ground Screws, we don't just provide cutting-edge ground screw technology; we also offer expert advice and support. Our team of specialists is here to guide you every step of the way, from choosing the right ground screw solution for your specific needs to addressing any questions or concerns you may have.

We also perform precise carrying capacity calculations for all our ground screw solutions, giving you the peace of mind that your project will withstand the test of time.

Additionally, we collaborate with trusted assembly partners who make the installation process efficient and cost-effective. Join us at FIRST BASE Ground Screws to revolutionize your construction projects with innovative technology, expert support, and a commitment to excellence.

CONTACT
OUR SPECIALISTS





FIXED FLANGE GROUND SCREWS

This ground screw type can be used for a large number of applications. The flange plate on the $\varnothing 76$ screw foundations has a thickness of 8 mm and a diameter of 200 mm. The flange plate on the $\varnothing 89$ and $\varnothing 114$ screw foundations has a thickness of 12 mm and a diameter of 220 mm. The flange plate on the $\varnothing 140$ screw has a thickness of 12 mm and a diameter of 260 mm.

All flange plates have wide slotted holes in various directions. In addition, a central nut is also welded in. Suitable as a foundation for garden rooms, roofs and verandas, log cabins, sheds, bridges, carports, halls and container constructions, modular homes, conservatory constructions and more.

Ø76 FIXED FLANGE



SCREW Ø76
x 1500 mm



SCREW Ø76
x 2000 mm



SCREW Ø76
x 2500 mm



SCREW Ø76
x 3000 mm

Ø89 FIXED FLANGE



SCREW Ø89
x 1550 mm



SCREW Ø89
x 2050 mm



SCREW Ø89
x 2550 mm



SCREW Ø89
x 3050 mm

Also available in different lengths

Ø114 FIXED FLANGE



SCREW Ø114
x 1600 mm



SCREW Ø114
x 2100 mm



SCREW Ø114
x 2600 mm



SCREW Ø114
x 3100 mm

Ø140 FIXED FLANGE



SCREW Ø140
x 2100 mm



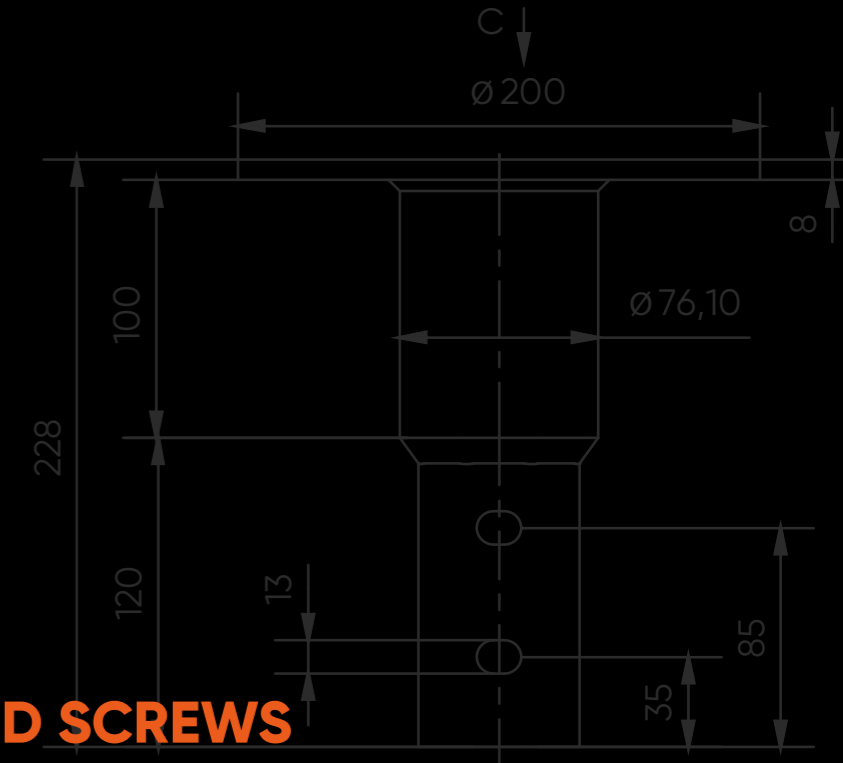
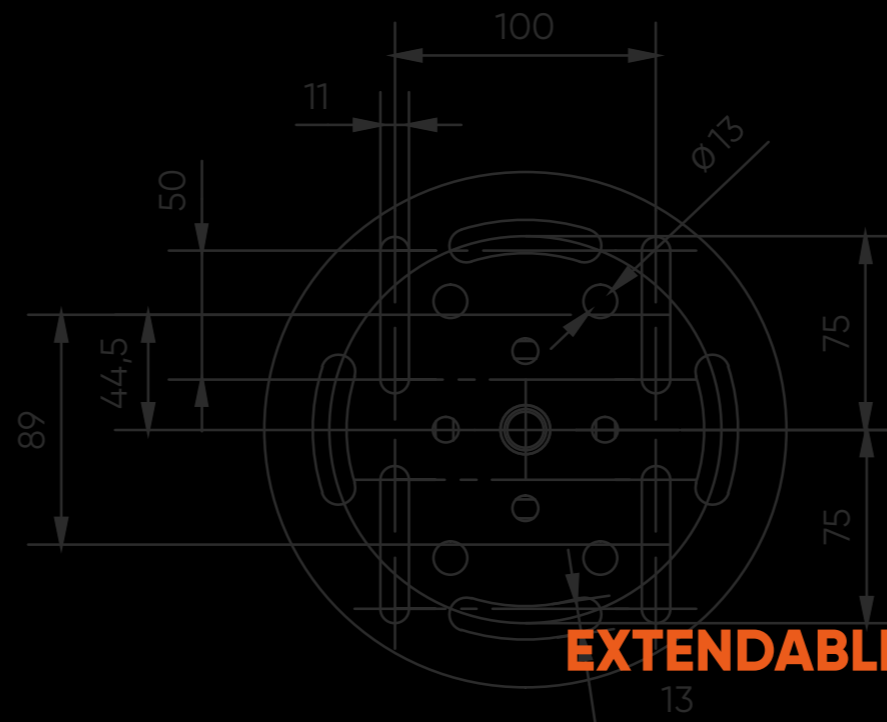
SCREW Ø140
x 2600 mm



SCREW Ø140
x 3100 mm

Also available in different lengths

Also available in different lengths



EXTENDABLE GROUND SCREWS

Extendable ground screws are suitable for all soil types. When a ground screw with a fixed length does not provide sufficient security, or when the load-bearing strata is at too great of a depth, an extendable ground screw from FIRST BASE can be used. Due to the large number of different diameters and lengths of screws and extension parts, the maximum load capacity can be achieved in every situation.

Extendable screw foundations are easy to transport and store. The diameters 89 mm and 114 mm screw foundations have a larger wall thickness (5.6 mm) which guarantees a longer lifespan. A ground screw in diameter 76 mm can be installed with our electrical machines. We recommend our hydraulic machines for larger diameters.

Ø76 EXTENDABLE – SCREW TIPS

Ø76 EXTENDABLE – EXTENSION



SCREW Ø76
x 800 mm



SCREW Ø76
x 1250 mm



SCREW Ø76
x 1550 mm



SCREW Ø76
x 2050 mm



EXTENSION Ø76
x 500 mm



EXTENSION Ø76
x 1000 mm



EXTENSION Ø76
x 1500 mm



EXTENSION Ø76
x 2000 mm

Ø76 EXTENDABLE – FLANGES



FLANGE Ø76
8 x 200 mm M16

Also available in: M20



FLANGE Ø76
8 x 200 mm M16
89 mm 3 x M16



FLANGE Ø76
8 x 80 mm M16

Ø89 EXTENDABLE – SCREW TIPS



SCREW Ø89
x 1200 mm



SCREW Ø89
x 2100 mm

Ø89 EXTENDABLE - EXTENSIONS



EXTENSION Ø89
x 500 mm



EXTENSION Ø89
x 1000 mm



EXTENSION Ø89
x 1500 mm



EXTENSION Ø89
x 2000 mm

Ø89 EXTENDABLE - FLANGES



FLANGE Ø89
12 x 220 mm M24



FLANGE Ø89
12 x 220 mm M24

Ø114 EXTENDABLE - SCREW TIPS



SCREW Ø114
x 1200 mm



SCREW Ø114
x 2100 mm

Ø114 EXTENDABLE - EXTENSIONS



EXTENSION Ø114
x 500 mm



EXTENSION Ø114
x 1000 mm



EXTENSION Ø114
x 1500 mm



EXTENSION Ø114
x 2000 mm

Ø114 EXTENDABLE – FLANGES



FLANGE Ø114
12 x 220 mm M24



FLANGE Ø114
12 x 220 mm M24

Ø140 EXTENDABLE – SCREW TIPS



SCREW Ø114
x 1200 mm



SCREW Ø114
x 2100 mm

Ø140 EXTENDABLE - EXTENSIONS



EXTENSION Ø114
x 500 mm



EXTENSION Ø114
x 1000 mm



EXTENSION Ø114
x 1500 mm



EXTENSION Ø114
x 2000 mm

Ø140 EXTENDABLE - FLANGES

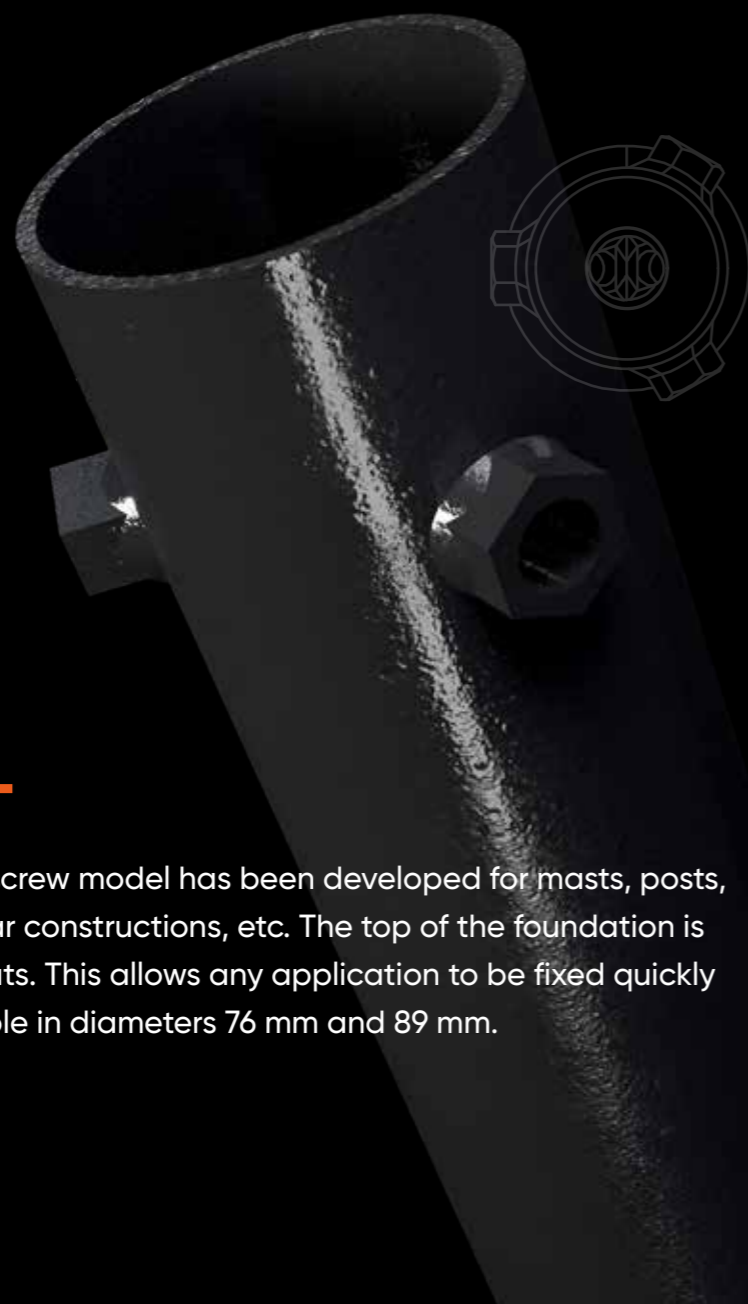


FLANGE Ø140
12 x 260 mm M24

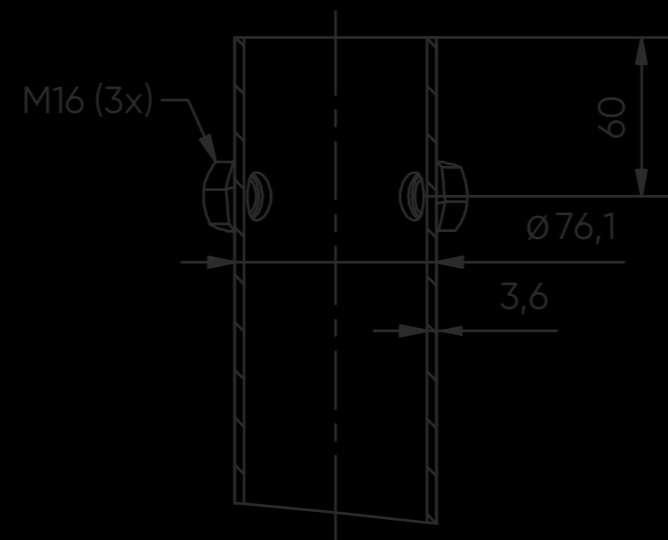


FLANGE Ø140
12 x 260 mm M24





Ø76 G3 MODEL



G3 MODEL

This open ground screw model has been developed for masts, posts, fencing, pipes, solar constructions, etc. The top of the foundation is fitted with 3 M16 nuts. This allows any application to be fixed quickly and stably. Available in diameters 76 mm and 89 mm.



SCREW G3 Ø76 x 800 mm SCREW G3 Ø76 x 1000 mm SCREW G3 Ø76 x 1250 mm SCREW G3 Ø76 x 1500 mm SCREW G3 Ø76 x 2000 mm

Ø89 G3 MODEL

Ø114 G3 MODEL



SCREW G3
Ø89 x 800 mm



SCREW G3
Ø89 x 1000 mm



SCREW G3
Ø89 x 1250 mm



SCREW G3
Ø89 x 1500 mm



SCREW G3
Ø89 x 2000 mm



SCREW G3
Ø114 x 1000 mm



SCREW G3
Ø114 x 1300 mm

Ø140 RIM MODEL



RIM MODEL

We offer an open ground screw with a diameter of 140 mm for installing posts, flagpoles and uprights for shade sails. Your application can be fixed easily and very stably with chippings.



RIM MODEL
Ø140 x 1300 mm



RIM MODEL
Ø140 x 1600 mm



RIM MODEL
Ø140 x 2100 mm

ACCESSORIES



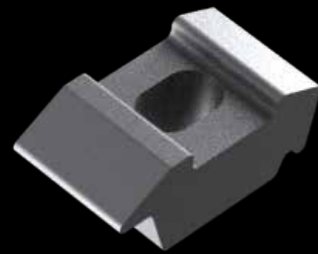
L-BRACKET M16
75 x 95 x 40 mm



L-BRACKET M16
180 x 202 x 80 mm



L-BRACKET M16
120 x 80 x 105 mm



BEAM CLAMP
3 - 20 mm



POST HOLDER M20

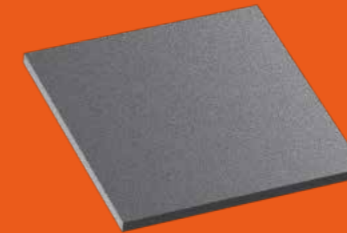


HE140 A/B STEEL BEAMS



FLANGE ENLARGER
12 X 300 X 300 mm

Also available in:
15 x 320 x 320 mm and 20 x 350 x 350 mm.



FILLER PLATE
170 X 170 X 8 mm



STEEL SHIM FOR ROUND FLANGE
8 X 200 - 2 X 200 mm

Also available in:
8 x 200 - 5 x 200 mm.



STEEL SHIM FOR ROUND FLANGE
12 X 220 - 2 X 220 mm

Also available in:
12 x 220 - 5 x 220 mm,
12 x 260 - 2 x 260 and 12 x 260 - 5 x 260.



TUBE CLAMP A Ø76

Also available in: Ø89, Ø114 and Ø140.



TUBE CLAMP B Ø76

Also available in: Ø89, Ø114 and Ø140.

MACHINES

For the installation of our ground screws, we provide the best drivers in the market. With a total of two handheld drivers and two hydraulic models, we can provide you with the best possible option for your projects.

Our drivers and machines are produced in Germany and Italy, which allows us to offer the highest possible quality at the best price. **Contact us** to see which machine suits you best.

Electric machine

XS 2.5



TORQUE
x 1,000 Nm

13

12

11

10

9

8

7

6

5

4

3

2

1



Hydraulic machine

MODEL 800



Hydraulic machine

MODEL 600

Electric machine

XE 5.0



CONTACT
OUR SPECIALISTS



**FIRST
BASE**



ELECTRIC GROUND SCREW DRIVING MACHINE XS 2.5

Electrically powered machine for mounting ground screws in hard-to-reach places. Very easy to operate. With a max. torque of 3.000 Nm, this machine can mount ground screws with a length of up to 1250 mm.



ELECTRIC GROUND SCREW DRIVING MACHINE XE 5.0

Powered machine for mounting ground screws in hard-to-reach places. Very easy to operate. With a max. torque of 5.000 Nm, this machine can mount ground screws with a length of up to 2 meters in average soil types.



TORQUE
UP TO 7.500 NM



HYDRAULIC GROUND SCREW DRIVING MACHINE MODEL 600

Hydraulically driven machine for mounting large numbers of ground screws. With a max. torque of 7.500 Nm this machine can mount ground screws with a large load bearing capacity.



HYDRAULIC GROUND SCREW DRIVING MACHINE MODEL 800

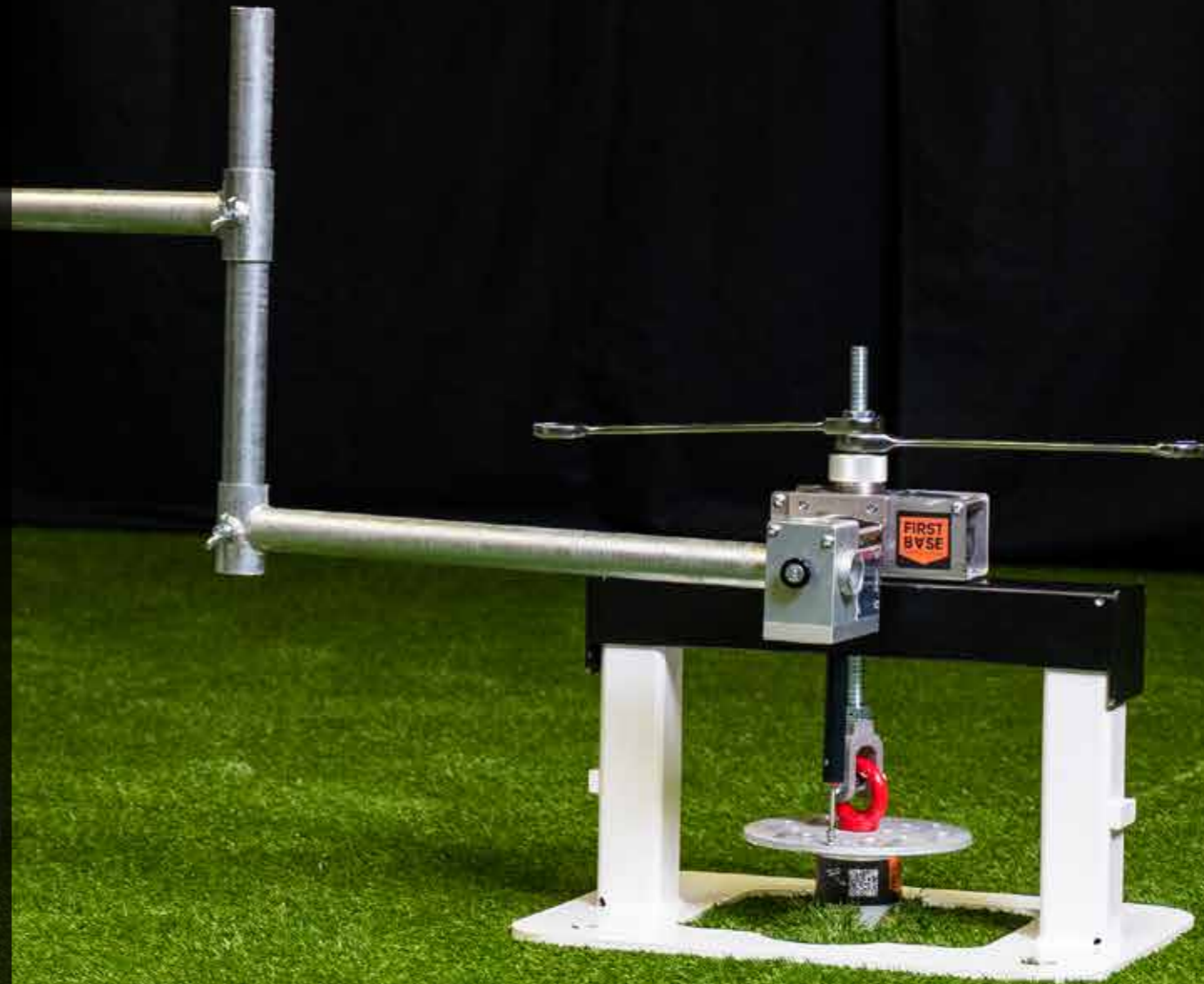
Hydraulically driven machine for mounting large numbers of ground screws. With a max. torque of 12.000 Nm this machine can mount ground screws with a very large load bearing capacity.



TORQUE
UP TO 12.000 NM

TEST EQUIPMENT TP 60

For quick, accurate and effective digital registered tensile tests on-site.
With a maximum pull capacity of 60.00 kN (6 tons) and a compact net weight of +/- 20 Kg, the smaller ground screws in diameters 63.5 - 68.0 and 76.1 mm can be assessed for load capacity in less than 10 minutes.



**FIRST
BASE**
GROUND SCREWS



www.firstbasegroundscrews.com